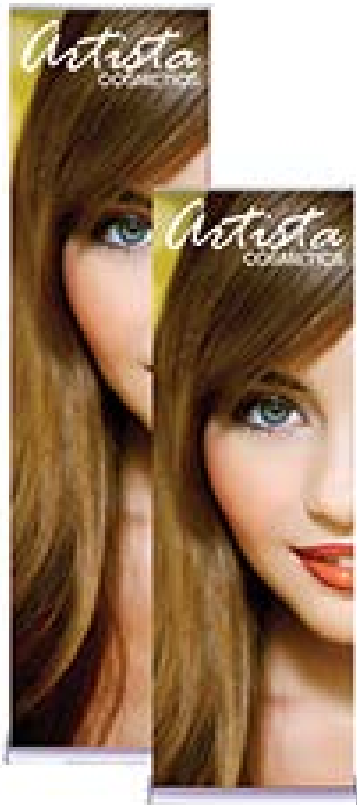


Product Code:  
SS24

# SILVERSTEP RETRACTABLE BANNER STAND 24"



Black base is available  
for 24" and 36"



## Product Features

Durable and uniquely designed, this aluminum stand is the perfect combination of versatility, appeal, and affordability.

Display Dimension	24" W x 85" to 92" H
-------------------	----------------------

Graphic Size	24" W x 85" to 92" H
--------------	----------------------

## Graphic Material

Super Flat Vinyl or Fabric

## Graphic Finishing

Banner attaches to the top and bottom of stand by Hook & Loop (Velcro) bar. 6" bleed on bottom

## Construction

Aluminum base w/plastic end caps

Aluminum pole w/plastic hook connector

Plastic top w/ Hook & Loop (Velcro) bar.

## Weights - Dimensions

Shipping Weight	12 lbs (stand only)
-----------------	---------------------

	14 lbs (with graphic)
--	-----------------------

Shipping Dimensions	31" x 13" x 6"
---------------------	----------------

## Package Includes

Retractable base w/end caps

Telescopic pole

One top clamp bar w/ end caps or Hook & Loop (Velcro) bar

Support pole

Silverstep Travel Bag (28 1/2" x 12" x 4")

## Warranty

Life Time on Stand

1 Year on Graphic

## Graphic Specification

24" W x 85" to 92" H (6" bleed on bottom)

*Graphic Turnaround Time is 2 business days for up to 2 sets*

